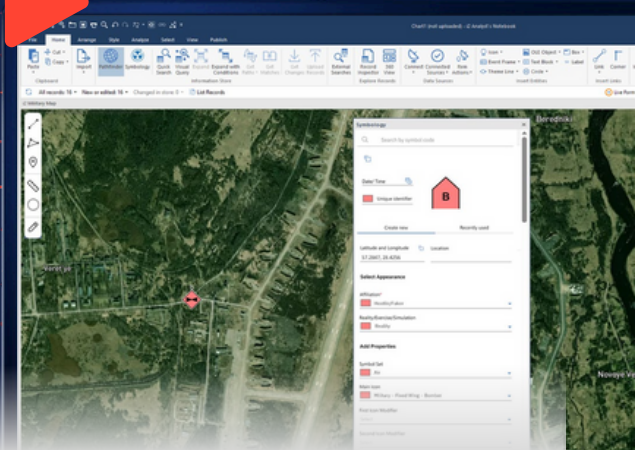




i2 Overwatch

i2group.com/solutions



The diverse, dynamic and global threat facing Western Armed Forces continues to intensify, with the adversary intentionally exploiting the grey zone that exists between and at the boundaries of conventional and non-conventional warfare.

i2 Overwatch is the continued enhancement of i2 Group's 35-year market leading Intelligence solutions. The investment is specifically to ensure Armed Forces can counter the threats across all domains and theaters, supporting the current and next generation of warfighters.

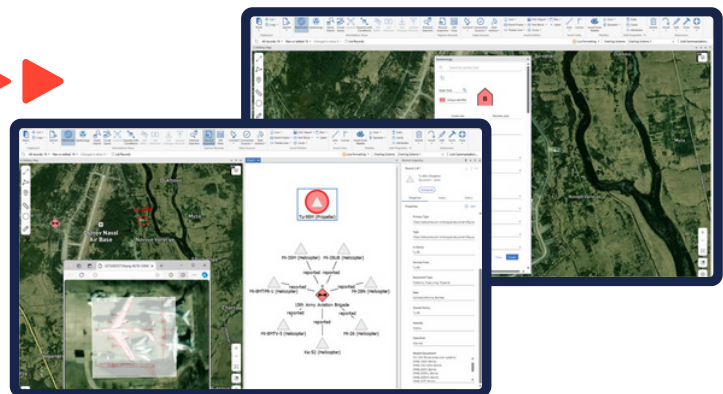
i2 Overwatch delivers a scalable, flexible architecture to support the end-to-end intelligence lifecycle—collecting, fusing, analyzing, and disseminating intelligence across strategic, operational, and tactical levels. It supports user-selected map layers or built-in geospatial views and integrates seamlessly with ISR, SIGINT, HUMINT, and OSINT data streams.

Existing and new integrations will ensure that i2 Overwatch can provide the consistent and accurate “Battlespace Object Management” view, allowing their choice of integrated J3 & J5 systems. It will manage and present this data in a way instantly recognizable and relatable to NATO members and partners to support interoperability and collaboration.

Highlights

The project is focused specifically on helping our Armed Forces:

- **Fuse the Fight Across Domains:**
Correlate geospatial movement, temporal trends, and network relationships to create a live, layered picture of the operational battlespace.
- **Command the Intelligence Picture**
Equip analysts and planners with dynamic tools to plan, adapt, and brief across theaters - from tactical edge to strategic command.
- **Exploit the Hidden Narrative**
Leverage advanced NLP to mine multilingual reports for entities, sentiment, and intent - revealing threat signatures before they materialize.



This effort will transform the existing trusted Analyst's Notebook platform into a solution that more effectively lends itself to the use case of managing the intelligence picture of conventional, high-intensity conflict with near-peer adversaries.

i2 Overwatch

Geospatial & Operational Awareness

i2 Overwatch provides rich terrain, satellite, and MGRS-based map views, integrated with NATO APP-6 compliant symbology. Analysts can define Areas of Interest (AOIs), conduct route analysis, and overlay environmental or threat data. Real-time synchronization between charts and maps ensures the operational picture remains up-to-date across all users and domains.

Unstructured Data Exploitation

The platform incorporates advanced natural language processing (NLP) to automatically extract critical entities - such as people, organizations, locations, and activities - from multilingual intelligence reports. Analysts can track sentiment and intent, recognize matched entities across documents, and maintain traceability to source data. This dramatically reduces manual effort and increases analytical accuracy.

Collaborative Intelligence Picture

i2 Overwatch includes a centralized chart store with role-based access controls, supporting distributed collaboration across operational and intelligence teams. Charts and findings can be shared via both web and desktop clients, exported as briefings or reports, and continuously updated to reflect new data - ensuring all stakeholders maintain a unified, decision-ready intelligence picture.



Visual & Temporal Analysis

Analysts can visualize complex relationships through link charts, threat networks, and hierarchical structures. Temporal tools allow for the sequencing of events, detection of patterns of life, and identification of anomalies across time and geography. These capabilities help uncover non-obvious insights that would otherwise remain hidden in siloed data sets.

Threat Network Disruption

i2 Overwatch enables analysts to map and disrupt adversary networks—whether violent extremist organizations (VEOs), insurgent cells, or near-peer command structures. Using link analysis, entity extraction, and temporal modeling, analysts can visualize relationships, identify key nodes, and anticipate threat behavior. This facilitates targeted operations and long-term degradation of hostile networks.

Operational Area Visualization

Overwatch helps build and sustain a dynamic Area of Operations (AO) view, complete with terrain overlays, MGRS grid support, and NATO symbology. Analysts and planners can integrate ISR feeds, track friendly and enemy movements, define AOIs, and visualize real-time battlefield changes. This shared operational picture enhances coordination and mission effectiveness across units and coalition partners.

Multilingual Intelligence Exploitation

Leveraging integrated NLP, i2 Overwatch processes intelligence reports in over 200 languages. It extracts key entities, sentiment, and relationships, and links them across reports—regardless of language or format. This accelerates the exploitation of captured media, field reports, or open-source material, providing a more complete and actionable understanding of adversary intent and activity.

To find out more, talk to our experts today...



i2 Group is the global leader in advanced visual analysis solutions delivering actionable intelligence to combat all threats including crime, terrorism, war and fraud; whether locally or internationally.

Intelligence Amplified™

i2group.com
hello@i2group.com

